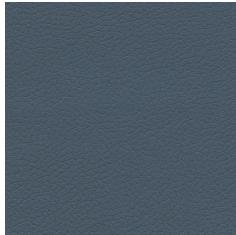


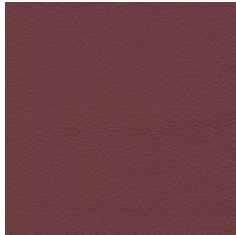


2025 Power Lift Recliner Fabric Collection

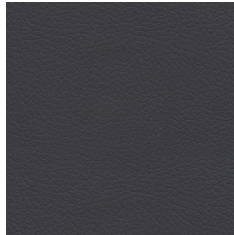
Brisa Pattern: Cleaning Code - W, Abrasion - 300,000 Double Rubs, 100% Polycarbonate Polyurethane Surface 65% Polyester 35% Rayon Backing



Arctic UAR



BeetRoot UBR



Black Onyx UBO



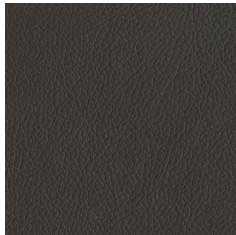
Bridle UBR



Buckskin UBS



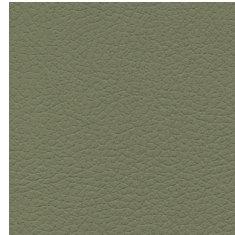
Celery UCE



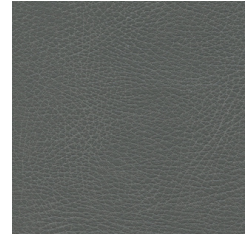
Coffee Bean UCB



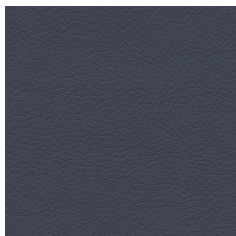
Cream UCR



Dill UDI



Iron UIR



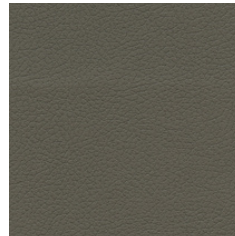
Night Navy UNN



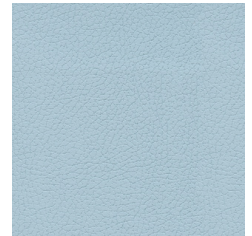
Ranchwood URW



Saddle USA



Shiitake USH



Sterling Blue USB

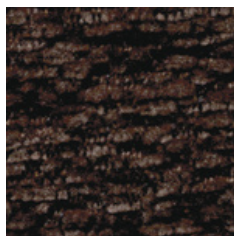
Easy Living Pattern: Cleaning Code - W, Abrasion - 30,000 Double Rubs, 100% Polyester



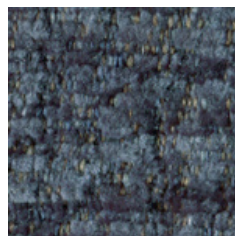
Anchor EAC



Antique EAN



Bittersweet EBS

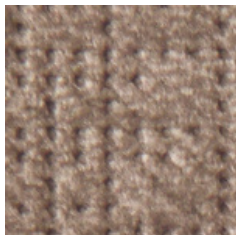


Oxford EOX

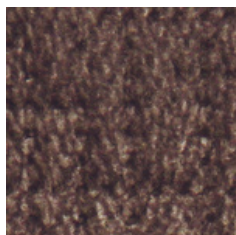


Sandstorm ESS

Imagine Pattern: Cleaning Code - W, Abrasion - 30,000 Double Rubs, 100% Polyester



Antler IAN



Elk IEL



Lakefront ILA

JZ Pattern: Cleaning Code - W, Abrasion - 30,000 Double Rubs, 95% Polyester 5% Polyurethane



Bourbon JBO



Smoke JSM



2025 Power Lift Recliner Fabric Collection

Noah Pattern: Cleaning Code - W, Abrasion - 50,000 Double Rubs, 100% Polyester



Asher NAR



Maize NMZ

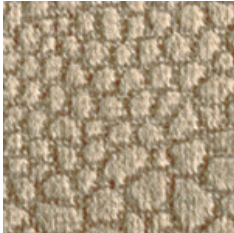


Midnight NMI

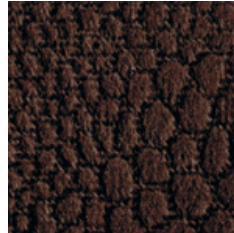


Nobel NNO

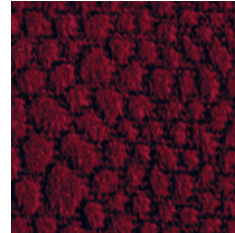
Scrumptious Pattern: Cleaning Code - W, Abrasion - 30,000 Double Rubs, 100% Polyester



Almond SAL



Coffeehouse SCF



Tuscan STU

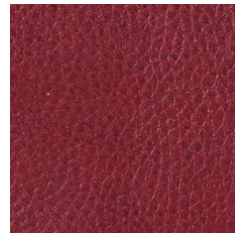
Sinda Pattern: Cleaning Code - W, Abrasion - 100,000 Double Rubs, 80% Polyester 20% Polyurethane



Dusk SDK



Lagoon SLA



Redwood SRE



Sparrow SSP



Umber SUM

Sutton Pattern: Cleaning Code - W, Abrasion - 30,000 Double Rubs, 100% Polyester



Acorn SAC



Graphite SGR



Maple SMA

Anli Pattern: Cleaning Code - W, Abrasion - 100,000 Double Rubs, 65% Resin 35% Backing Fabric



Chestnut ACH